

ProKure[®] 1

ClO₂ Deodorization & Disinfection

EPA
Registered



Formula Packets



ProKure[®] V PROKURE1 LIQUID

Kills bacteria, viruses*, mold and odor-causing bacteria

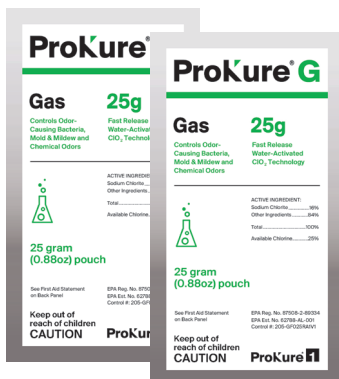
Suitable for water and smoke damage restoration

Spray directly onto surface

No-rinse formula

No harmful residue

Water-Activated



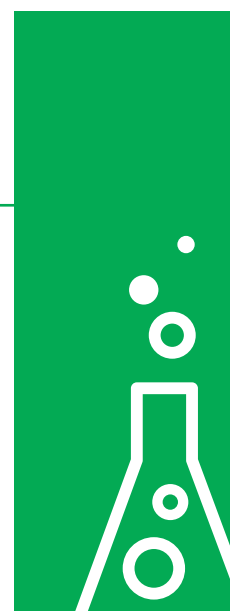
ProKure[®] G PROKURE1 GAS

Controls odor-causing bacteria, mold and mildew

Approved for buildings undergoing water, smoke damage and other odor control services

Fast, easy, effective

Water-Activated



866.206.1301 • ProKure1.com

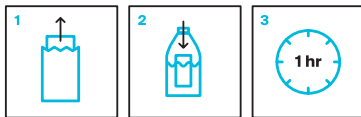
See EPA labels for full instructions and precautionary statements.

205-COL-RESTO1PAGE

Formula Packet Details

ProKure® V

Product Category	Size	Item #	Yields (Disinfectant at 100ppm)	Yields (Deodorizer at 500ppm)
Restoration	4.2 ounces	205-V420R	25 gallons	5 gallons
	0.84 ounces	205-V084R	5 gallons	1 gallon

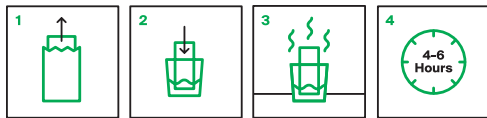


Directions for Use:** Open the silver foil packet and remove the white pouch (DO NOT OPEN THE WHITE POUCH). Place the white pouch in an opaque (not clear) bottle filled with water. Allow pouch to activate in water for one hour to reach maximum strength.*

EPA Reg. #: 87508-3-89334

ProKure® G

Product Category	Size	Item #	Heavy Odor Coverage Area
Restoration	25 grams	205-GF025R	1,000 cubic feet



NOTE: PEOPLE AND PETS MUST NOT BE PRESENT IN ENCLOSED AREAS WHEN PROKURE G IS ACTIVATED.

Directions for Use:** Open the silver foil packet and remove the white pouch (DO NOT OPEN THE WHITE POUCH). Place the end of the white pouch that has the square indentations into a plastic cup filled with 1.5" of water. Place it on a stable, level surface in a central location. Allow at least 4-6 hours for the system to work.*

EPA Reg. #: 87508-2-89334

CONTAINERS & APPLICATORS



JOB PROTOCOLS

*See EPA Labels and User Guide for full instructions.

WE'RE MOBILE!
Download the ProKure1 App
Today or Visit the Job Calculator
on Our Website:
prokure1.com/calculator

**IT IS A VIOLATION OF FEDERAL LAW TO USE THIS PRODUCT IN A MANNER INCONSISTENT WITH THE LABELING. READ THE ENTIRE LABEL AND USE STRICTLY IN ACCORDANCE WITH PRECAUTIONARY STATEMENTS AND USE